



Choptank Electric
Cooperative

A Touchstone Energy
Cooperative

Luck of the Draw

Scholarship Application

Qualifications

To be eligible for this scholarship, applicants must:

1. Be an active Choptank Electric member OR a dependent or legal ward of an active Choptank Electric member.
2. Be a graduating high school senior OR a co-op member.
3. Be enrolled OR planning to enroll at an accredited two or four year college, university, or a technical school for the fall 2020 term.
4. Dependents: Both active dependent AND parent(s)/legal guardian members **must** be registered and checked in by 6:00 P.M.
5. **Must** be present at the end of the Annual Meeting to win.
6. Winners of prior years' scholarship are not eligible to participate.
7. Employees and dependents of Choptank Electric who are members, and Board of Directors and their dependents are not eligible to participate.

Scholarship Application Form

Choptank Electric is awarding ten \$1,000 scholarships at the end of its 2020 Annual Meeting. An additional \$2,000 scholarship will be awarded in honor of retired Somerset County Board member, Carl Widdowson. Scholarships will be awarded to eligible students chosen at random.

To qualify for the drawing, complete this application in its entirety and submit to communications@choptankelectric.coop. The deadline to submit is **Monday, August 10, 2020, at 4:30 P.M.**

The Annual Meeting will be held Thursday, **August 13, 2020**, at the Wicomico Youth and Civic Center located at 500 Glen Ave. in Salisbury. Doors will open at 4:30 P.M. Applicants **must register and check-in by 6:00 P.M.** for the business meeting. All received applications will get a confirmation email. Processed applications will receive a notification by phone call. **If you do not receive any notifications, we did not receive your application.**

APPLICATIONS WILL NOT BE ACCEPTED AT THE ANNUAL MEETING.

Name of Applicant:

I am: ☐ An active Choptank Electric Member

☐ A dependent of an active Choptank Electric Member

Attending High School and College/Trade School of choice:

Name(s) of Parent/Legal Guardian (qualifying member):

Choptank Electric Account Number:

Home Address:

Member Phone Number:

Email:



Luck of the Draw

Scholarship Application

How to Apply

To complete this application, you must:

1. Complete all the information required on pages 1 & 2.
2. Read pages 3 & 4 of the packet and answer the 10-question quiz on page 5.
3. Return completed packet to Choptank Electric Cooperative one of the following ways:
 - **Option 1:** Email completed application to communications@choptankelectric.coop by Monday, August 10, 2020, at 4:30 P.M.
 - **Option 2:** Drop off at walk-in offices in Denton or Salisbury by Monday, August 10, 2020, by 4:30 P.M. **DENTON**
24820 Meeting House Road
Denton, MD 21629 **SALISBURY**
6520 Walston Switch Road
Salisbury, Maryland 21804 **WE ARE NO LONGER**

**ACCEPTING APPLICATIONS
AT THE ANNUAL MEETING.**

I hereby confirm that I will be attending a post-secondary institution during the 2020-2021 fall semester.

If my name is selected for a scholarship, I hereby agree to allow my name and photograph to be publicized in conjunction with the Choptank Electric Cooperative promotion materials.

I, as parent/legal guardian, hereby certify that I am the account holder. I also understand that if I am not present, as the account holder, at the Annual Meeting, my applicant is not eligible to participate in the Luck of the Draw Scholarship drawing.

I also understand that my applicant and I must be registered for the annual meeting and checked-in at the Luck of the Draw table by 6:00 P.M. If I am not registered and checked-in by that time, my applicant is not eligible to participate in the Luck of the Draw Scholarship drawing.

Student Signature:

Parent/Guardian/Member Signature(s):

**If you are awarded the scholarship, you must show proof of enrollment. The funds will be sent directly to your school of choice.*



Luck of the Draw Scholarship Application

History of Cooperatives

History of Rural Electrification

As late as the mid-1930s, nine out of 10 rural homes were without electric service. The farmer milked his cows by hand in the dim light of a kerosene lantern. His wife was a slave to the wood range and washboard.

The lack of electricity in rural areas kept their economies entirely and exclusively dependent on agriculture. Factories and businesses, of course, preferred to locate in cities where electric power was easily acquired. For many years, power companies ignored the rural areas of the nation.

Rural Electrification Administration

The idea of providing federal assistance to accomplish rural electrification gained ground rapidly when President Franklin D. Roosevelt took office in 1933. On May 11, 1935, Roosevelt signed Executive Order No. 7037 establishing the Rural Electrification Administration (REA). It was not until a year later that the Rural Electrification Act was passed and the lending program that became the REA got underway.

Within months, it became evident to REA officials that established investor-owned utilities were not interested in using federal loan funds to serve sparsely populated rural areas. But loan applications from farmer-based cooperatives poured in, and REA soon realized electric cooperatives would be the entities to make rural electrification a reality.

In 1937, the REA drafted the Electric Cooperative Corporation Act, a model law that states could adopt to enable the formation and operation of not-for-profit, consumer-owned electric cooperatives.

History of Choptank Electric Cooperative

The Cooperative was incorporated as Choptank Co-



operative, Inc. on Sept. 21, 1938, following passage of the Rural Electrification Act. Its first 78 miles of line were energized in Caroline County on Dec. 15, 1939, serving 184 members. The cooperative's name was changed to Choptank Electric Cooperative in 1942. Then in 1976, Choptank Electric Cooperative joined Old Dominion Electric Cooperative (ODEC) to obtain lower wholesale power costs.

In 2006, Choptank Electric purchased the town of St. Michaels as additional territory, which added approximately 4,000 new members to our service territory.



Choptank Electric Cooperative
A Touchstone Energy® Cooperative

Luck of the Draw Scholarship Application

Choptank Electric Cooperative Today

Today, Choptank Electric Cooperative serves 53,484 member-owners on Maryland's Eastern Shore. The Cooperative's 6,261 miles of line serve portions of Caroline, Cecil, Dorchester, Kent, Queen Anne's, Somerset, Talbot, Wicomico and Worcester counties.

Choptank Electric has 10 board seats. One seat represents each county for which is served by Choptank Electric along with one additional seat which represents the Ocean Pines District. The Board of Directors is elected to a three-year term at the Annual Meeting.

Choptank Electric Cooperative Mission

Choptank Electric Cooperative exists to provide reliable and cost effective electricity that improves the quality of life for our member-owners. We are committed to service excellence guided by the Seven Cooperative Principles.



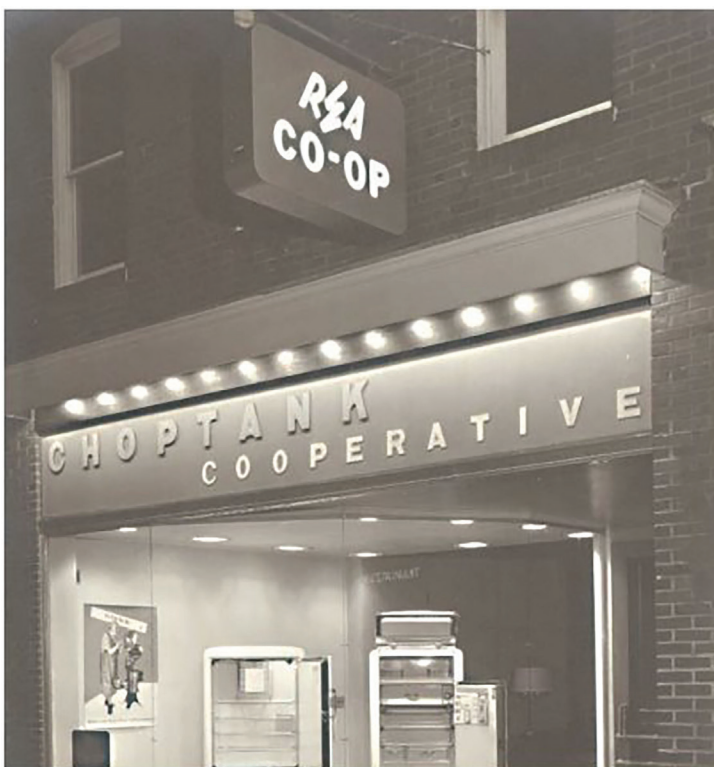
The Cooperative Difference

Choptank Electric Cooperative is one of 900 electric cooperatives serving over 42 million people in 47 states. All Cooperatives follow a set of core principles, also known as the 7 Cooperative Principles. These Principles are:

1. Voluntary and Open Membership
2. Democratic Member Control
3. Members' Economic Participation
4. Autonomy and Independence
5. Education, Training, and Information
6. Cooperation Among Cooperatives
7. Concern for Community

When a member signs up to receive electric service from Choptank Electric, they become a member of Choptank Electric, not a customer. While investor-owned utilities return a portion of any profits back to their shareholders, electric co-ops operate on an at-cost basis. Co-ops return their profits to their members, also known as capital credits.

Co-ops also play an important role in their local communities. Youth Tour, Operation Round Up, and scholarship programs are just a few ways we impact the community.





**Choptank Electric
Cooperative**
A Touchstone Energy®
Cooperative



Luck of the Draw Scholarship Quiz

1. How many people in rural communities went without power before the Rural Electrification Act?
 - A. 1 out of 10
 - B. 7 out of 10
 - C. 9 out of 10
2. The lack of electricity in rural areas kept their economies exclusively dependent on _____.
 - A. Agriculture
 - B. Tourism
 - C. The water
3. Which president established the Rural Electrification Act?
 - A. Theodore Roosevelt
 - B. Franklin D. Roosevelt
 - C. Harry S. Truman
4. Choptank Electric Cooperative was incorporated in _____.
 - A. 1935
 - B. 1938
 - C. 1940
5. Choptank Electric started with _____ members.
 - A. 184
 - B. 284
 - C. 584
6. Who is Choptank Electric's wholesale power supplier?
 - A. Old Dominion Electric Cooperative
 - B. Direct Energy
 - C. Spark Energy
7. How many counties does Choptank Electric serve?
 - A. 4
 - B. 7
 - C. 9
8. What is Choptank Electric's ultimate goal?
 - A. Service excellence
 - B. Improve the community
 - C. All the of the above
9. What are the 7 Cooperative Principles?
10. Co-ops return their profits to their members, who are ratepayers and stockholders in the company. This is known as:
 - A. Return on investment
 - B. Capital Credits
 - C. Profits